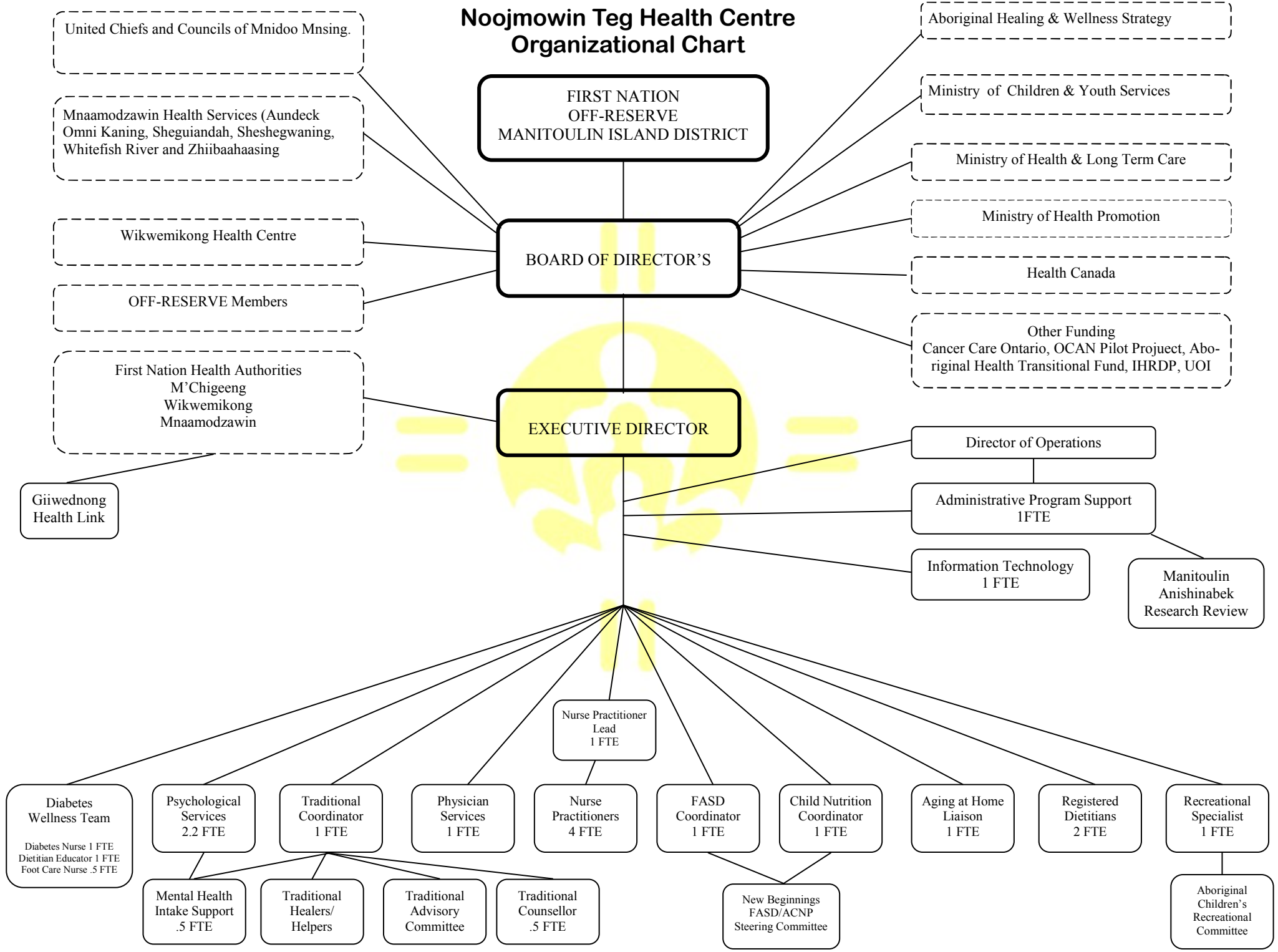


Noojmowin Teg Health Centre Organizational Chart



FIRST NATION
OFF-RESERVE
MANITOULIN ISLAND DISTRICT

BOARD OF DIRECTOR'S

EXECUTIVE DIRECTOR

Director of Operations

Administrative Program Support
1FTE

Information Technology
1 FTE

Manitoulin
Anishinabek
Research Review

**Diabetes
Wellness Team**

Diabetes Nurse 1 FTE
Dietitian Educator 1 FTE
Foot Care Nurse .5 FTE

Psychological
Services
2.2 FTE

Traditional
Coordinator
1 FTE

Physician
Services
1 FTE

Nurse Practitioner
Lead
1 FTE

Nurse
Practitioners
4 FTE

FASD
Coordinator
1 FTE

Child Nutrition
Coordinator
1 FTE

Aging at Home
Liaison
1 FTE

Registered
Dietitians
2 FTE

Recreational
Specialist
1 FTE

Mental Health
Intake Support
.5 FTE

Traditional
Healers/
Helpers

Traditional
Advisory
Committee

Traditional
Counsellor
.5 FTE

New Beginnings
FASD/ACNP
Steering Committee

Aboriginal
Children's
Recreational
Committee

United Chiefs and Councils of Mnídoo Mnsing.

Mnaamodzawin Health Services (Aundeck
Omni Kaning, Sheguiandah, Sheshegwaning,
Whitefish River and Zhiibaahaasing)

Wikwemikong Health Centre

OFF-RESERVE Members

First Nation Health Authorities
M'Chigeeng
Wikwemikong
Mnaamodzawin

Giiwednong
Health Link

Aboriginal Healing & Wellness Strategy

Ministry of Children & Youth Services

Ministry of Health & Long Term Care

Ministry of Health Promotion

Health Canada

Other Funding
Cancer Care Ontario, OCAN Pilot Project,
Aboriginal Health Transitional Fund, IHRDP, UOI